

Meraki Teleworker VPN

Secure Remote Access

Secure Remote Access

Meraki Teleworker VPN makes it easy to extend the corporate LAN to remote sites, without requiring all clients and devices to have client VPN software. Workers in small branches, home offices or on the road can securely connect to the corporate email server, file shares and central PBX as if at headquarters, while still being able to access local resources such as printers and share drives.

Key Benefits:

- Secure office network experience from any location
- Scales to 1,000's of remote sites
- Security policy enforcement at the network edge
- Zero AP pre-configuration required
- Works with all Meraki MR Enterprise access points
- Included with the Meraki Enterprise license



10 Minute Set-Up

With Meraki Teleworker VPN there is no need to pre-provision access points. When a new remote site needs to be set up, simply create a remote network in the Meraki Dashboard, add access points, identify the SSIDs that will be tunneled and you're done. Then just ship the access point to the remote site for the user to plug into their cable or DSL modem. No access point or user-side configuration is necessary, making installation simple enough for a non-technical user.

HQ Network Experience From Anywhere

Remote APs automatically establish a persistent, secure Layer 2 IPsec tunnel back to a Meraki virtual concentrator running on a server at headquarters. This provides the same experience to users as though they were sitting at a desk at headquarters. They can discover file shares and access in-house enterprise applications without the hassle of installing and running client VPN software.

No Additional Hardware Required

Meraki wireless networks have already eliminated the need for a wireless LAN controller at headquarters. Now, integration of site-to-site VPN functionality into the access point, combined with the built-in stateful firewall and a virtual concentrator, further reduces the number of hardware appliances needed in the home or branch office. In addition to saving money on hardware, this reduces the complexity of the branch environment, resulting in fewer failure points and calls to IT.

Stay Connected with Voice and Data

The company PBX system can now be extended to remote sites, allowing administrators to monitor and manage the entire remote office infrastructure. Plug IP phones directly into Meraki access points or use wireless phones and they'll seamlessly connect to the PBX at headquarters over the VPN tunnel. Users can now take advantage of the company phone system from remote sites and enjoy high-quality voice with WMM and 802.1q QoS.

Virtual, Cloud-Managed Concentrator

Quickly turn any commodity-grade server into a virtual concentrator by downloading a virtual machine image directly from Dashboard. The concentrator can then be managed over the Internet in Dashboard, just like other Meraki networking hardware. The VM's resources can be easily scaled to meet your needs by scaling up with additional hardware resources or by scaling out by adding additional concentrators or physical machines.

Centralized Management

The Meraki's award-winning Enterprise Cloud Controller enables administrators to manage and monitor 1,000's of remote locations from a single pane of glass. Problems can be diagnosed remotely using Dashboard's built-in, real-time diagnostics tools. Even the smallest IT staff can be empowered to manage large distributed networks over the Internet from anywhere.

Recommended Use Cases

Small Branch Offices (< 5 persons)

- Provide a secure corporate network experience to branch workers with minimal IT setup
- IT administrators can fully support the branch wireless network remotely
- Eliminate costly and complex on-site VPN hardware, software and leased lines

Teleworker / Executive Home Office

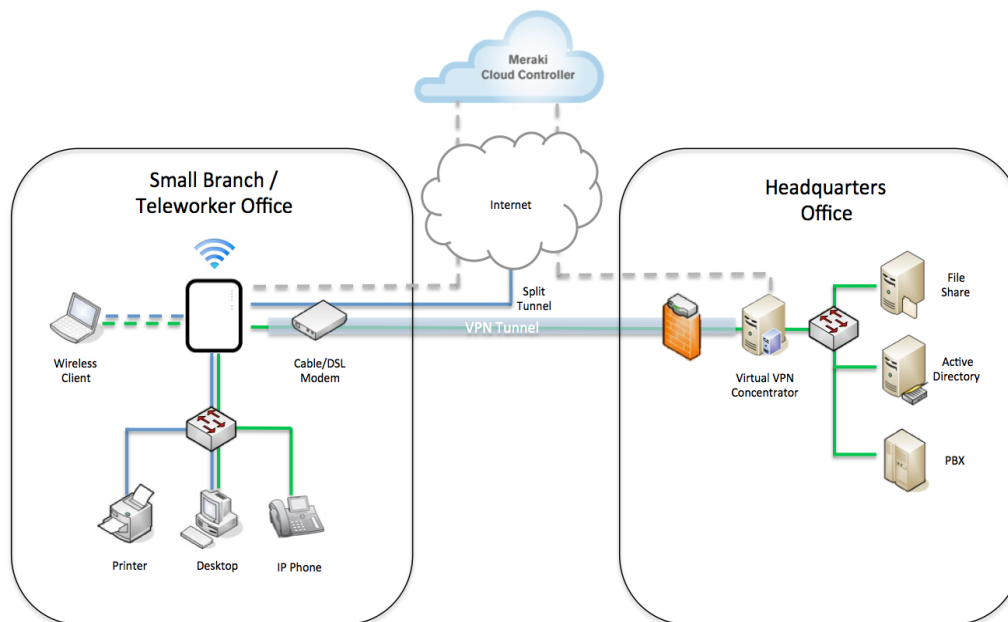
- Allow IT administrators to easily support home networks from a central location
- Extend corporate IP phone systems to home offices with high-quality voice
- Secure corporate LAN access while allowing access to local printers
- Guests and family members can access the Internet on a separate SSID

Temporary Sites

- Set up a temporary network in minutes at events, conferences and seminars
- Provide secure employee access to the LAN and guest access for customers and partners

Road Warrior

- Make it easy for executives, field salespeople, and others to have an in-office network experience while on the road



Specifications

> VPN Tunnel

- Layer 2 connectivity between Meraki APs and the virtual concentrator
 - IPsec standards-based encryption
 - Tunnel both wireless and wired connections
 - Multi-tunnel support - Up to 15 tunnels per AP for sophisticated deployments
-

> Authentication Methods

- WPA2-Enterprise (802.1x)
 - WPA2-Personal
 - Captive Portal
-

> Security

- Stateful policy firewall in AP provides corporate security policy enforcement at network edge
 - Personal, Internet-only SSID for non-corporate devices and users
 - Integrates with Meraki Network Access Control to check for endpoint compliance with corporate anti-virus policies
-

> Additional Features

- QoS for VoIP (WMM, 802.1q)
 - No pre-configuration of access points required
 - Works on a public IP or behind a NAT
 - Integrates with Meraki Traffic Shaper for application-aware bandwidth shaping to avoid uplink bandwidth saturation
-

> Split Tunneling*

- Policy-based forwarding for VPN, local and Internet traffic
 - Increase Internet site performance
 - Print on a home network while accessing corporate resources
 - Wired ports can be designated VPN or local
-

> Virtual Concentrator

- Up to 1,000 remote APs per concentrator
 - Up to 250 Mbps throughput of VPN traffic per concentrator
 - Downloads directly from Dashboard
 - Runs in VMware Player or Workstation
 - Hardware requirements for host server:
 - 1 GHz minimum processor speed
 - 1 GB available hard drive space
 - 500 MB dedicated RAM
-

> Access Point Compatibility

- Compatible with all Meraki Enterprise access points
-

> Ordering Information

- Included with Meraki Enterprise Cloud Controller license
 - No additional hardware necessary
-

* Available March 2011
