

PoE Systems



Single and Multiport PoE Midspans

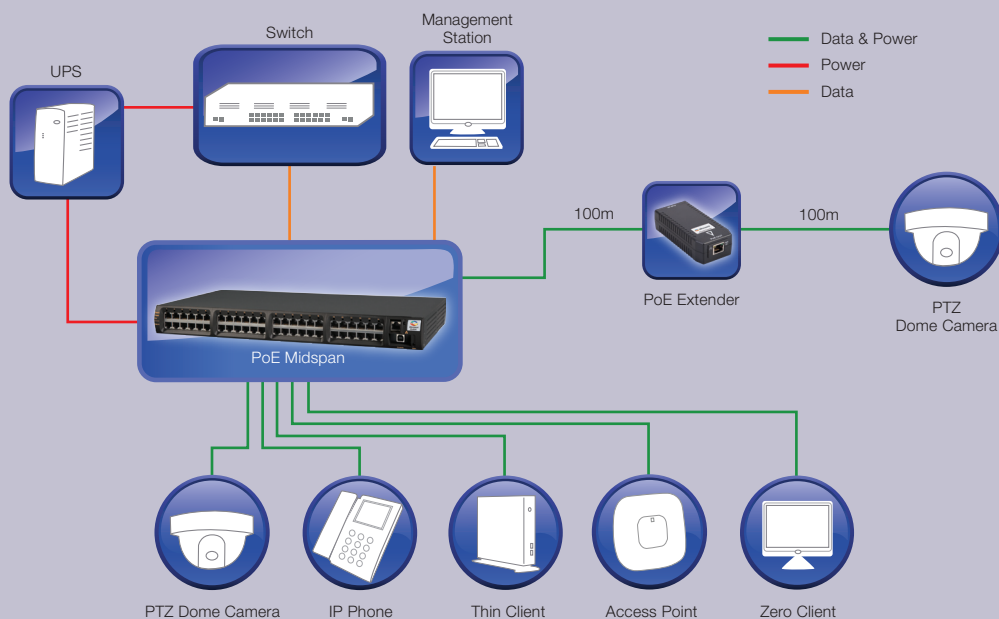
High Power PoE+ Systems

PoE Systems for Outdoor Deployments

Cloud-based Power Management Software

Splitters & Extenders

How will you



Vision: To be the premiere intelligent network power solutions provider

power that?

Microsemi PoE Systems

Best of Breed PoE Solutions for Network PoE Upgrades

Microsemi PoE systems enable delivery of up to 72 watts of reliable, scalable Power over Ethernet (PoE) to IP phones, IP cameras, WLAN access points, Zero Clients and other Ethernet devices over standard Cat5 or better Ethernet cable. All Microsemi systems support 10/100/1000 data rates and are available in 1, 4, 6, 12 and 24 port increments, bringing flexibility and longevity to network upgrades. New to Microsemi's PoE lineup is a catalog of outdoor IP66 rated PoE midspans, hubs and switches, enabling new power and data solutions for environmentally challenging deployments.

As well as being innovators of PoE systems, Microsemi is a market leader in PoE technology and is a major contributor to IEEE 802.3af, 802.3at and HDBaseT standards.

Mission: We are committed to empowering our partners success by providing innovative industry leading power solutions

Single and Multiport Midspans



PD-3501G Midspan

This single port midspan offers a solution for security network and other low port density IP Terminal installations.

- Provides 15.4W
- IEEE802.3af compliant



PD-3504G Midspan

This 4 port midspan offers a solution for IP telephones, wireless LAN access points, security network cameras and IP terminals.

- 4 ports
- Provides 15.4W per port
- IEEE802.3af compliant



PD-9001GR Midspan

This 30W single port midspan provides a high-power solution for remote powering of current and emerging high power applications.

- Provides 30W
- IEEE802.3at compliant



PD-5501G

This DC powered single port midspan provides a high-power solution for remote powering while dissipating 50% less power.

- Provides 30W per port
- 12-24VDC
- IEEE802.3at compliant



PD-9004G Midspan

This 4 port midspan offers a 30W solution for powering IP cameras, WLAN APs, and other edge devices in SMB deployments.

- IEEE802.3at compliant
- Provides 30W per port
- 3 units can fit in 1U 19" rack



PD-9501G Midspan

This 60W single port, high power midspan enables remote powering of current and emerging high power applications.

- Provides 60W
- IEEE802.3at compliant
- AC and DC models available
- Energy efficient PoE (EPPoE) dissipates 50% less power when powering 25.5W devices



PD-6500G Midspan Family

This remote management enabled midspan family provides 15.4w of PoE to IP terminals, leaving network infrastructure completely unaltered.

- 6/12/24 ports
- Remote power management
- Provides 15.4W per port
- IEEE802.3af compliant



PD-5524G Midspan

This high power, remote management enabled EEPoE midspan is designed specifically to cut power dissipation over cables by 50% while powering end devices that require up to 30W.

- 24 ports
- Provides 30W per port
- EEPoE technology – reduces power loss over cables by 50%
- Midspan-midspan mutual backup
- Remote power management
- High power over 4-pairs
- IEEE 802.3at compliant



PD-9000G Midspan Family

This high power, remote management enabled midspan family is designed specifically to power IP terminals requiring up to 36W.

- 6/12/24 ports
- Provides 36W per port
- IEEE802.3at compliant
- Midspan-midspan mutual backup
- Remote power management



PD-9500G Midspan Family

This high power, remote management enabled EEPoE midspan family is designed specifically to power IP terminals requiring up to 72W.

- 6/12/24 ports
- Remote power management
- EEPoE technology – reduces power loss over cables by 50%
- High power over 4-pairs
- IEEE802.3at compliant
- Midspan-midspan mutual backup

Microsemi's First Outdoor IP66 Rated PoE Switch



PDS-102GO

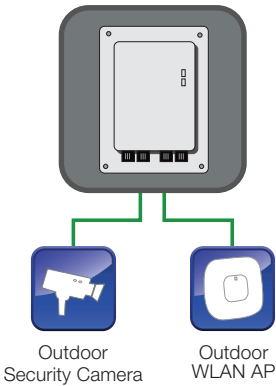
The PDS-102GO is an outdoor PoE switch, enabling the connection of two powered devices to the network such as outdoor WLAN access points, outdoor IP Cameras and outdoor P2P radios. The switch is IP66 rated, offers lightning protection and can be installed in outdoor environments. Deployment is simple and straight forward - there is no need to open the unit during installation.

The PDS-102GO delivers PoE up to 30W per device. In addition, it enables remote monitoring and control of the devices' status, including remote reset, while extending the reach between the switch and powered devices by an additional 100m, to a maximum of 200 meters - a major benefit in many applications.

Management Capabilities

System Network Management Capabilities	Web Interface – used to view unit PoE & Network status, unit configuration and view unit production information.
	SNMP v2/v3 – Monitor unit over the network (MIB-II RFC1213), monitor / configure unit PoE capabilities (RFC3621).
	Telnet – used to view unit PoE & Network status, unit configuration and production information. Software update, Enable/Disable PoE functionality, ping remote Network device for connectivity test.
	SNMP Traps – used to report various PoE events as PoE PD insertion/removal.
	SysLog – used to report PoE events, Invalid remote user access, initial DHCPv4/v6 address, etc.
Ethernet Switch Network Capabilities	10M/100M/1000Mbit Half Duplex / Full Duplex Ethernet speed.
	8K internal MAC address lookup engine.
	Auto MDIX
	Jumbo frames
PoE Capabilities	IEEE 802.3at – delivers up to 30 Watts per port – View and status.
	PoE Enable/Disable – Enable/ Disable PoE ports Power output (Ethernet data is always enabled).
	Weekly Schedule – Automatic activation/deactivation of PoE ports based on time of day.
	Remote device reset – Turning temporary device power off and back on resets attached PD device.
Configuration Options	Web based: Via a WEB browser
	SNMPv1/2c/3: Via an SNMP management application on a remote computer
	Telnet: Via a Telnet application on a remote computer
Security and User Authentication	Web, Telnet, SNMPv2, SNMPv3

Midspans for Outdoor Installations



PD-9002GHO

The PD-9002GHO offers plug and play installation for outdoor Ethernet based devices and is particularly well suited to power IP camera's and WLAN APs together, where the camera is passing up to 1G data wirelessly through the WLAN AP.

- 2 ports PoE passive HUB
- 802.3at rated (30W/port)
- IP 66 rated for outdoor deployment
- -40 degrees to 131 F (-40°C to +55°C) operating ambient temperature

PD-9001GO and PD-9501GO



- PD-9001GO: 30W
PD-9501GO: 60W
- Outdoor midspan for outdoor devices
- Outdoor rated: IP66
- Extended temperature range
PD-9001G: -40°C, +65°C
PD-9501G: -40°C, +50°C
- Fully IEEE802.3at standard compliant
- Plug 'n Play installation (installer does not have to open unit)
- Supports both 802.3af and 802.3at powered devices
- Includes critical surge protection
- AC power input

PD-9001G-40/SP



- Indoor midspan for outdoor devices
- Up to 40W of power on 2-pairs
- IEEE 802.3at compliant with 2-event classification
- IEEE 802.3af backward compatible
- Surge protection according to GR 1089
- Safe and reliable power to WLAN access points
- Compact design with 1U height
- AC power input

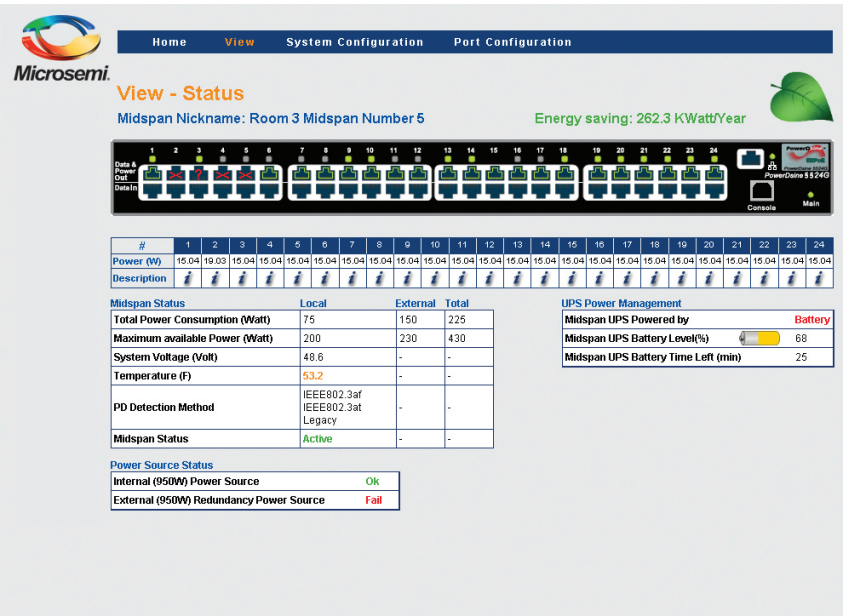
PD-OUT/SP11 Lightning Surge Protector



- Outdoor PoE surge protection
- IP66 rated
- Outdoor rated: IP66
- Suitable for Ethernet
- Supports data rates up to 1 Gbps
- All eight lines protected

PowerView Pro Management





Highly secure cloud-based and network management platform



- SNMPv3 and web-based management
- Supports both IPv4 and IPv6 addressing
- Comes standard in the PD-6500G, PD-9000G, and PD-9500G families and PD-5524G*
- Monitors battery life in UPS and manages flow to critical and non-critical devices
- Monitors statistics, usage, and availability
- Allows devices to be remotely rebooted
- On/off scheduling allows power saving in periods of non-use as well as remote reboot capabilities to increase network efficiency and uptime

* Multiport devices only

Accessories

Family	Product Number	Description
 <p>PoE Tester</p>	PD-AFAT-Tester	<p>The Power over Ethernet (PoE) Tester, connected to an RJ-45 outlet, tests the cabling infrastructure for the presence of power, either IEEE802.3af or IEEE802.3at (2-pairs 30W or 4-pairs 60W).</p> <p>The PoE Tester also identifies the existence and type of Power Sourcing Equipment (either End-span* or Midspan) in your network.</p>
 <p>802.3af Active Splitter</p>	PD-AS-601/5	Power conversion from 48V to 5V output, 2 x DC jacks: round 3.4x1.35mm and 5.5x2.5mm
 <p>802.3at Active Splitter</p>	PD-AS-701/12	Power conversion from 48V to 12V output, 2 pairs, for use with PD-9000G family
	PD-AS-701/24	Power conversion from 48V to 24V output, 2 pairs, for use with PD-9000G family
	PD-AS-951/12-24	Power conversion from 48V to 12V or 24V DC output (user selectable), 4 pairs, for use with PD-9500G family
	PD-AS-951/18	Power conversion from 48V to 18V DC output, 4 pairs for use with PD-9500G family
 <p>PoE Extender</p>	PD-PoE Extender	1-port, extends PoE range by additional 100m, 802.af/802.at output power. Combine with PD-3504G or PD-9004G to effectively power edge-based Ethernet devices.

Typical Power Consumption of Common Applications

Power Consumption	Applications	Microsemi PoE Solution
3-5W	IP phones	PD-3500G family PD-6500G family
5-12.95W	Wireless access points IP cameras	PD-3500G family PD-5524G PD-6500G family
12.95-20W	802.11n High Power APs Biometric access control	PD-9000G family PD-5524G
20-25.5W	802.11ac access points PTZ IP cameras Zero clients RFID readers Video IP phones 802.16 base stations Industrial sensors	PD-9000G family PD-5524G
25.5-40W	802.11ac access points Zero clients Video IP phones Workgroup switches Point of sales Information kiosks	PD-9001G-40/SP PD-9000G family PD-5524G
40-60W	Outdoor PTZ Cameras Ultraportable laptops Notebook laptops Zero clients Point of sales Information kiosks	PD-9500G family

Selection Guide

Indoor PoE Midspan

Watts per Port	Product Number	Number of Ports	Remotely Managed	Gigabit	Input	Warranty	Other
15.4W	PD-3501G/AC	1		x	AC	1-year	
15.4W	PD-3504G/AC	4		x	AC	1-year	
15.4W	PD-6506G/AC/M	6		x	AC	Limited lifetime	
15.4W	PD-6512GAC/M	12	x	x	AC	Limited lifetime	
15.4W	PD-6524G/AC/M/F	24	x	x	AC	Limited lifetime	400W total power
30W	PD-5501G/12-24VDC	1		x	DC	1-year	
30W	PD-5524G/ACDC/M	24	x	x	AC & DC	Limited lifetime	450W total power
30W	PD-9001GR/AC	1		x	AC	1-year	
30W	PD-9004G/AC	4		x	AC	1-year	
36W	PD-9006G/ACDC/M	6	x	x	AC & DC	Limited lifetime	
36W	PD-9012G/ACDC/M	12	x	x	AC & DC	Limited lifetime	
36W	PD-9024G/ACDC/M/F	24	x	x	AC	Limited lifetime	1000W total power
60W	PD-9501G/AC	1		x	AC	1-year	
60W	PD-9501G/24VDC	1		x	DC	1-year	
60W	PD-9501G/48VDC	1		x	DC	1-year	
72W	PD-9506G/ACDC/M	6	x	x	AC & DC	Limited lifetime	
72W	PD-9512G/ACDC/M	12	x	x	AC & DC	Limited lifetime	
72W	PD-9524G/ACDC/M	24	x	x	AC & DC	Limited lifetime	
36W	PD-9024G/ACDC/M	24	X	X	AC & DC	Limited lifetime	450W total power
36W	PD-9024G/DC/M	24	X	X	DC	Limited lifetime	
36W	PD-9024G/AC/F	24		X	AC	Limited lifetime	1000W total power
36W	PD-9024G/ACDC/M/F	24	X	X	AC & DC	Limited lifetime	1000W total power
72W	PD-9501G/AC	1		X	AC	1-year	
72W	PD-9506G/ACDC/M	6	X	X	AC & DC	Limited lifetime	
72W	PD-9512G/ACDC/M	12	X	X	AC & DC	Limited Lifetime	

PoE Systems for Outdoor Installations

Watts per Port	Product Number	Number of Ports	Remotely Managed	Gigabit	Input	Warranty	Other
30W	PD-9001GO/AC	1		x	AC	1-year	Outdoor deployment
40W	PD-9001G-40/SP/AC	1		x	AC	1-year	Indoor deployment
60W	PD-9501GO/AC	1		x	DC	1-year	Outdoor deployment
60W	PD-9501GO/12-24VDC	1		x	DC	1-year	Outdoor deployment
60W	PD-9501GO/48VDC	1		x	DC	1-year	Outdoor deployment
30W	PD-9002GHO/AC	2		x	AC	1-year	PoE hub - outdoor deployment

PoE Switches for Outdoor Installations

Watts per Port	Product Number	Number of Ports	Remotely Managed	Gigabit	Input	Warranty	Other
30W	PDS-102GO/AC/M	1 data input, 2 PoE output	x	x	AC	1-year	



For additional information, email
sales.support@microsemi.com



Microsemi Corporate Headquarters
One Enterprise, Aliso Viejo, CA 92656 USA
Within the USA: +1 (800) 713-4113
Outside the USA: +1 (949) 380-6100
Sales: +1 (949) 380-6136
Fax: +1 (949) 215-4996
email: sales.support@microsemi.com
www.microsemi.com

Microsemi Corporation (Nasdaq: MSCC) offers a comprehensive portfolio of semiconductor and system solutions for communications, defense and security, aerospace and industrial markets. Products include high-performance and radiation-hardened analog mixed-signal integrated circuits, FPGAs, SoCs and ASICs; power management products; timing and synchronization devices and precise time solutions, setting the world's standard for time; voice processing devices; RF solutions; discrete components; security technologies and scalable anti-tamper products; Power-over-Ethernet ICs and midspans; as well as custom design capabilities and services. Microsemi is headquartered in Aliso Viejo, Calif., and has approximately 3,000 employees globally. Learn more at www.microsemi.com.

©2014 Microsemi Corporation. All rights reserved. Microsemi and the Microsemi logo are trademarks of Microsemi Corporation. All other trademarks and service marks are the property of their respective owners.

MS3-005-14