

vSpace[®] PRO

SUPPORTED OPERATIONS SYSTEMS

- Windows Server 2016 (technical preview)
- Windows Server 2012 R2 U1
- Windows Server 2012
- Windows Server 2008 R2 SP1
- Windows MultiPoint Server 2012
- Windows MultiPoint Server 2011
- Windows 10 (64-bit) *
- Windows 8.1 (64-bit) *
- Windows 7 (64-bit) *
- Integrates with server virtualization infrastructure solutions from VMWare, Citrix and Microsoft

* 1:1 VDI

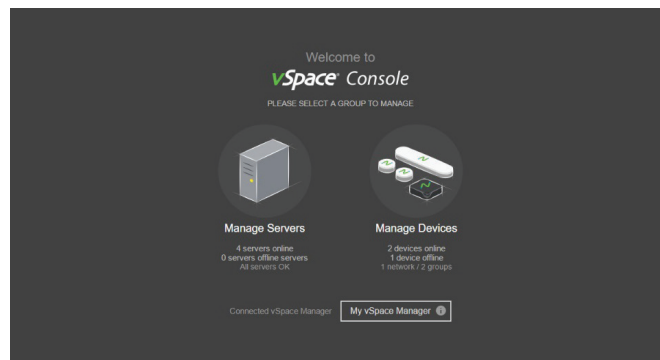
KEY FEATURES AND BENEFITS

- Administrators can view/control/broadcast a message to any session on the same network remotely
- Simple deployment and a cost-effective solution with implementation from any location
- Reduced deployment time to configure and setup thousands of virtual desktops in days, not weeks
- Desktop roaming enables complete flexibility and mobility in the workplace
- Compatible with industry leading applications, OS and server virtualization solutions

vSpace Pro 10 delivers enhanced performance, expanded manageability and the latest Windows 10 experience to end users. This new desktop virtualization platform supports nine popular Windows[®] operating systems for use with NComputing thin clients, Chromebooks, PCs, and Raspberry Pi. The cloud-based Management Portal allows an administrator to remotely manage all system users, maintain licensing and premium features, track devices, and provide visibility into their complete hardware/software installation. As a result, patches, updates and upgrades are easily deployed.

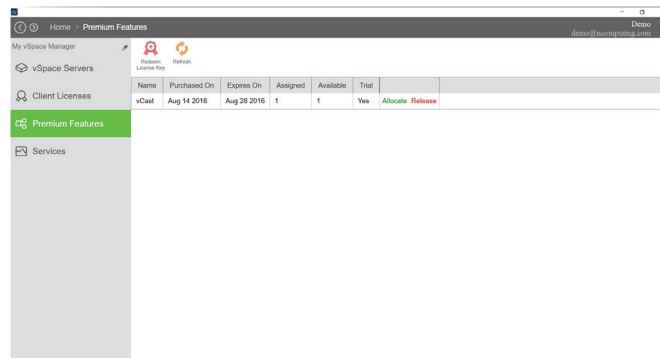
vSpace Pro 10 ushers in improved workflow, faster deployment times and reduced on-going operation costs, further lowering the TCO. For the first time we've introduced a new platform layer that allows for opt-in deployment of subscription-based services and one-time paid features, expanding the platform capabilities to better fit your environment.

New Features



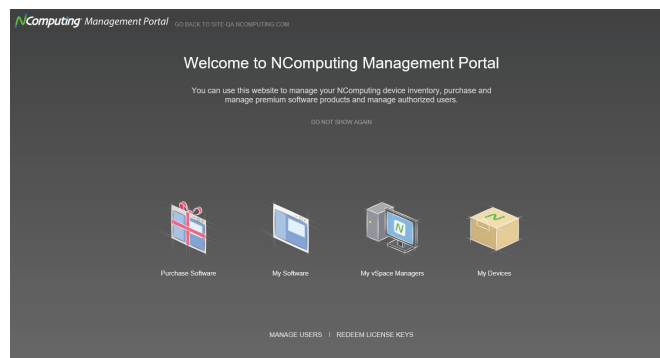
vSpace Console

Monitors vSpace Server deployment and asset management including performance optimization, firmware updates and device provisioning



vSpace Manager

Dynamically allocates and reallocates software license seats among connected vSpace Servers



Management Portal

Cloud-based solution manages and allocates NComputing software licenses/purchases, asset tracking and monitors premium features; central repository for registered devices

Premium Features

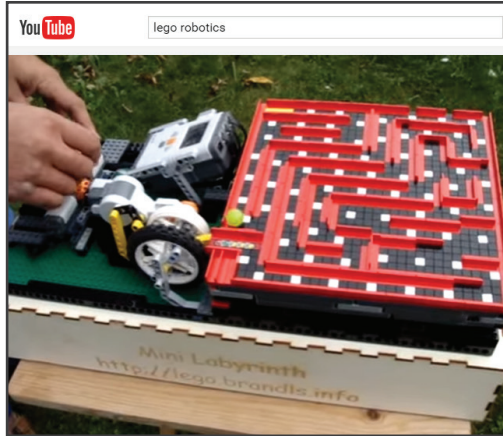
SUPPORTED ACCESS CLIENTS

Thin clients:

- L-series (L250, L300, L350)
- M-series (All models)
- MX-series (All models)
- CX-series (All models)

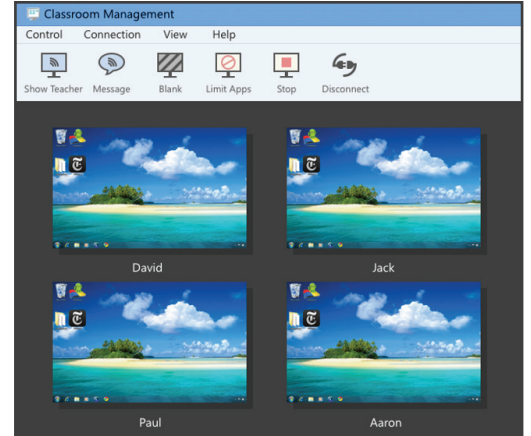
Software clients:

- vSpace Client for Windows
- vSpace Client for Chromebook
- vSpace Client for Raspberry Pi (coming soon)



vCAST

Boosts web streaming of HD content while reducing server workload



vSpace Classroom Management

Facilitates teacher/student interaction to improve overall productivity

vSpace Health Monitoring

Enables administrators to view the health of servers and their connected clients with instant alerts and historical usage, enabling real-time actions including stop session or reset server. (Expected in Q4, 2016)

Architecture Overview

