

Trustwave AppDetectivePRO

▶ DATABASE AND BIG DATA SCANNER

Benefits

- Leverage a solution that is quick to deploy and easy to use, with low hardware requirements.
- Access easy to use built-in regulatory policies or create custom policies to match specific business needs.
- Gain insight into your auditors' findings by using the database tool most frequently used by them.
- Improve your database security posture with auditing and identify your privileged users with user rights review.
- Stay current with a continuously updated knowledgebase backed by Trustwave SpiderLabs security researchers.

Databases are critical repositories of customer information and intellectual property and are enticing targets for cyber criminals. Securing the perimeter is no longer enough and businesses need to implement database controls in addition to securing their networks and applications. Organizations also need to meet stringent regulatory and audit requirements that make the task even more daunting. As databases become more challenging to secure, organizations are also finding it difficult to find and retain resources to implement effective database security controls.

AppDetectivePRO is a database and big data scanner that identifies configuration mistakes, identification and access control issues, missing patches, and any toxic combination of settings that could lead to escalation of privilege attacks, data leakage, denial-of-service (DoS), or the unauthorized modification of data held within data stores.

With a simple setup and an easy-to-use interface, you can discover, assess, and report on the security, risk, or compliance posture of any database or big data store within your environment - on premise or in the cloud - in minutes. AppDetectivePRO is an excellent addition to any existing security toolkit with its focus on relational databases and big data stores. It complements host/network operating system and static/dynamic application scanners.

Discover

Our data security solutions provide a complete inventory of data stores along with their respective objects, users and enabled security features within your organization.

- Easily review all the accessible assets, user access levels, and security feature usage throughout your environment.
- Identify and highlight recently added, rogue or missing data store installations and objects.
- Quickly ascertain the configuration state of all your data stores (relational or big data).

Assess

AppDetectivePRO examines relational databases and big data stores for configuration mistakes, identification and access control issues, missing patches, or any toxic combination of settings that could lead to escalation of privilege attacks, data leakage, denial of service (DoS), or the unauthorized modification of data.



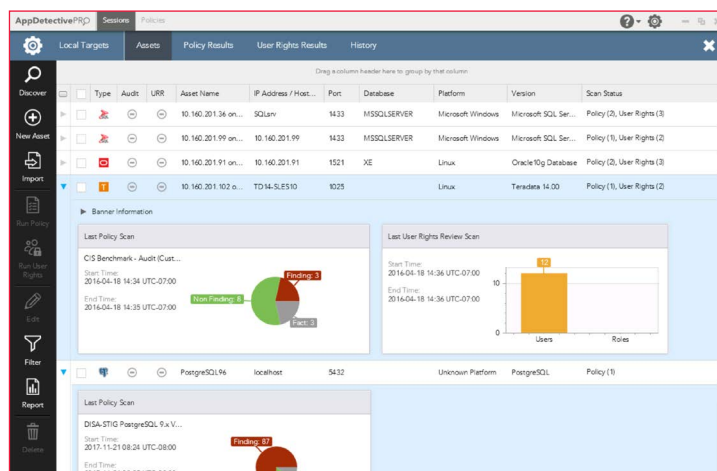
We provide unique, agentless, unauthenticated (network port inspection), and authenticated (credentialed) assessment approach with no impact on the target data store. This multifaceted approach provides an accurate security assessment of the relational database or big data store.

We also include a comprehensive and continuously updated library of relational database and big data store vulnerability and security configuration issues backed by Trustwave SpiderLabs. With built-in and customized policies, users can examine data stores for vulnerability, configuration and user rights issues.

Report

AppDetectivePRO reports and dashboards provide a consolidated view of vulnerabilities, threats, risks, and compliance efforts across heterogeneous data store environments. They empower organizations to document their current status, demonstrate progress, effectiveness, and operational efficiency. Organizations can evaluate trends, and drill down for a detailed view of each individual database, group of databases, or databases of specific business units or groups within the enterprise using our reporting and analytics platform.

- Intuitive, easy-to-configure and customize
- Supports business objectives that include enterprise security and financial risk posture, operational efficiency, regulatory compliance, and strategic planning



Features

Agentless, Automated Data Scanning

Discover, assess and report on the security, risk, or compliance posture of any database or big data store across your environment, on premise or in the cloud, in minutes.

Complete, Accurate and Intuitive Data Security Solution

Automated inventory, testing, information gathering, and analysis empower you with the intelligence to harden the security of your data stores.

Automated Data Security, Risk and Compliance Questionnaire Development

Create new or customize from existing pre-built data security controls based on industry standards and regulatory requirements.

Manage Data Security Assessment Results and Remediation Efforts

Facilitate closing the loop from initial discovery of databases and big data stores to fixing the vulnerability or policy violation.

Continuously Updated Data Security Knowledgebase

Extensive and continuously updated analytics and knowledgebase of relational databases and big data security best practices, configuration settings, and vulnerabilities.

Why Trustwave AppDetectivePRO?

AppDetectivePRO is a database and big data store scanner that can quickly uncover configuration mistakes, identification and access control issues, missing patches or any toxic combination of settings that could potentially compromise the integrity of the database.

Because of its simple setup and intuitive interface, you don't have to be a database expert to use it. Immediately discover, assess and report on the security, risk or compliance posture of any database or big data store within your environment – either on premise or in the cloud – within minutes.